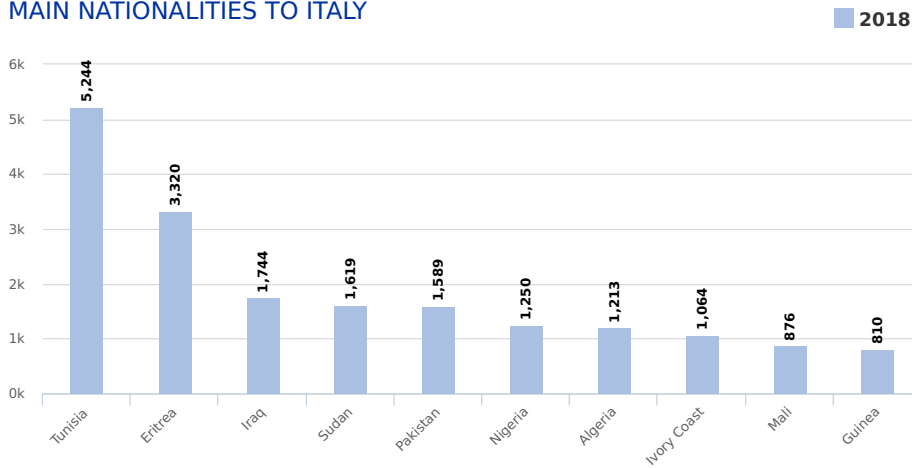
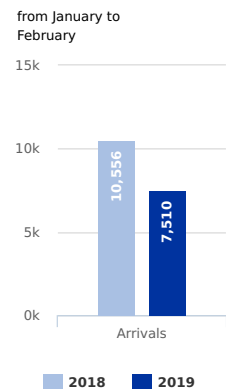




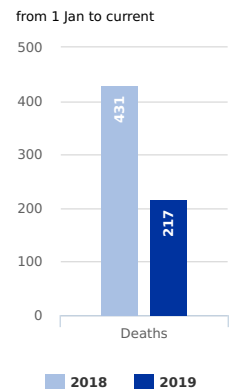
MAIN NATIONALITIES TO ITALY



ARRIVALS

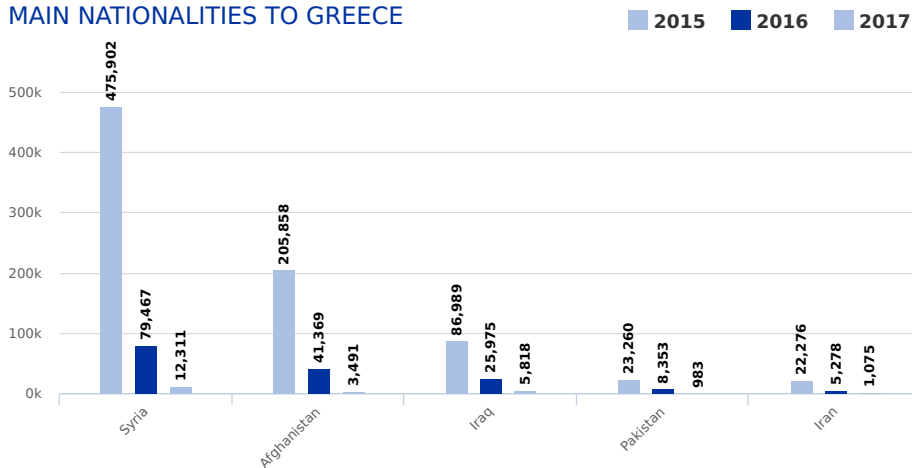


DEATHS

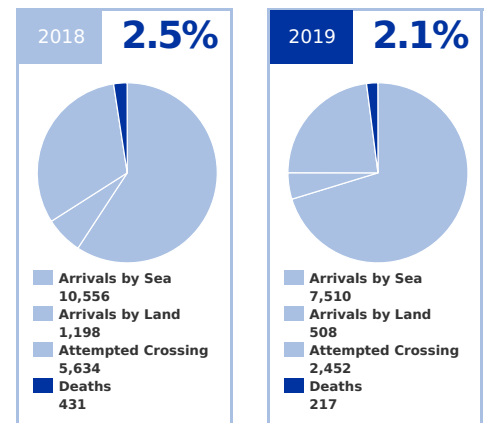


Note: Arrivals data for the past year are from January to end of the month specified. Arrivals data for the current year are updated every Tuesday and Friday

MAIN NATIONALITIES TO GREECE



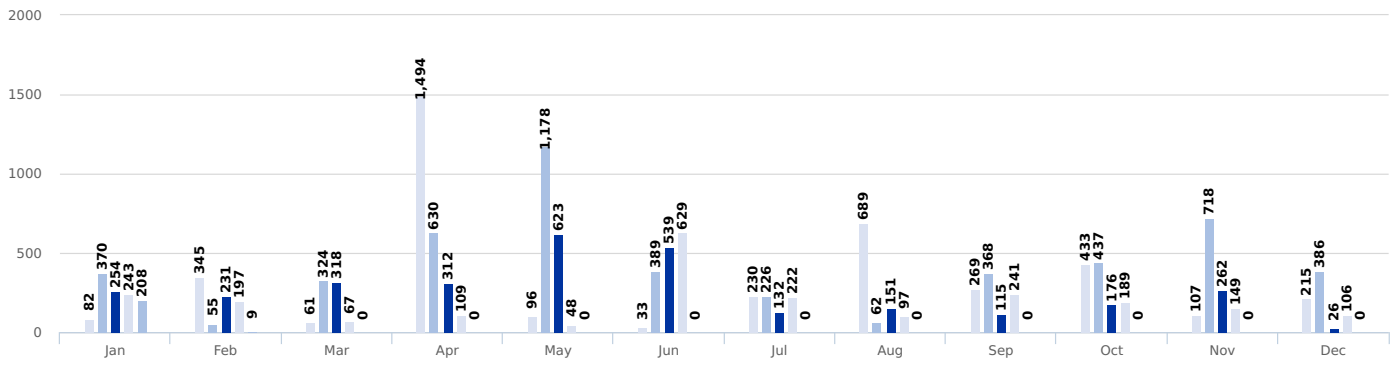
ESTIMATED FATALITY RATE



Note: Arrivals data for the past year are from January to end of the month specified. Arrivals data for the current year are updated every Tuesday and Friday. Attempted crossings include those migrants rescued from the Mediterranean by the Turkish and Libyan Coast Guards.

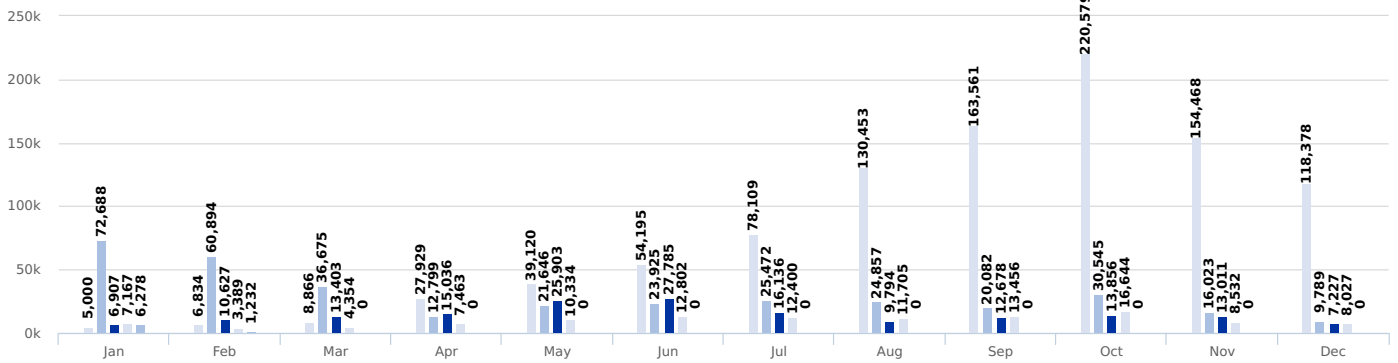
MEDITERRANEAN FATALITIES BY MONTH

2015 2016 2017 2018 2019



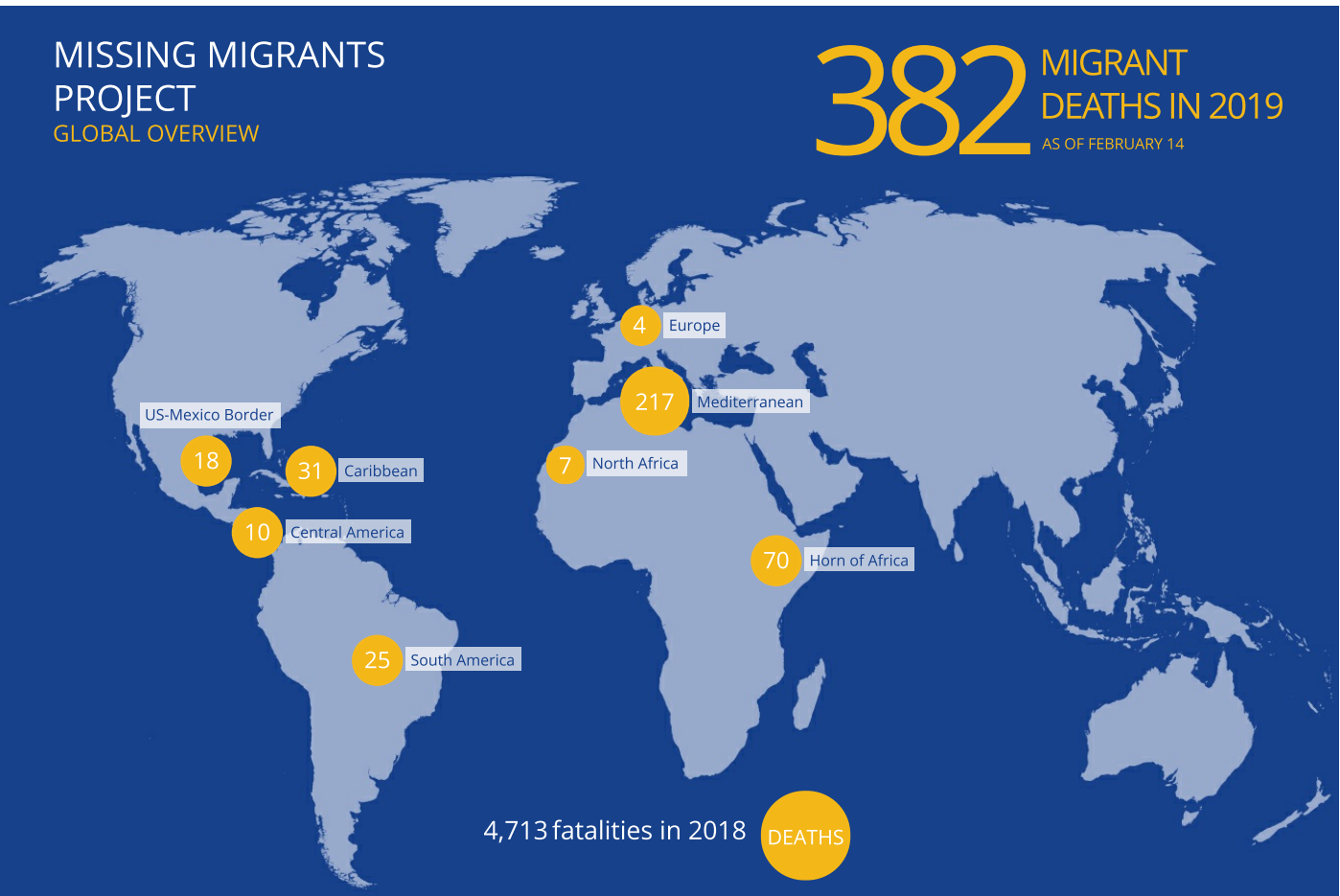
MEDITERRANEAN ARRIVALS BY MONTH

2015 2016 2017 2018 2019



MISSING MIGRANTS PROJECT GLOBAL OVERVIEW

382 MIGRANT DEATHS IN 2019
AS OF FEBRUARY 14



Data set are estimates from IOM, national authorities and media sources. The boundaries and names shown and the designations used on maps do not imply official endorsement or acceptance by IOM.

Missing Migrants Project is a joint initiative of IOM's [Global Migration Data Analysis Centre \(GMDAC\)](#) and Media and Communications Division (MCD)
Back issues of the Mediterranean Update are available: <https://goo.gl/SXcy/t>